

iGrafx IDEFO[®]2009

Leverage the Power of IDEF0

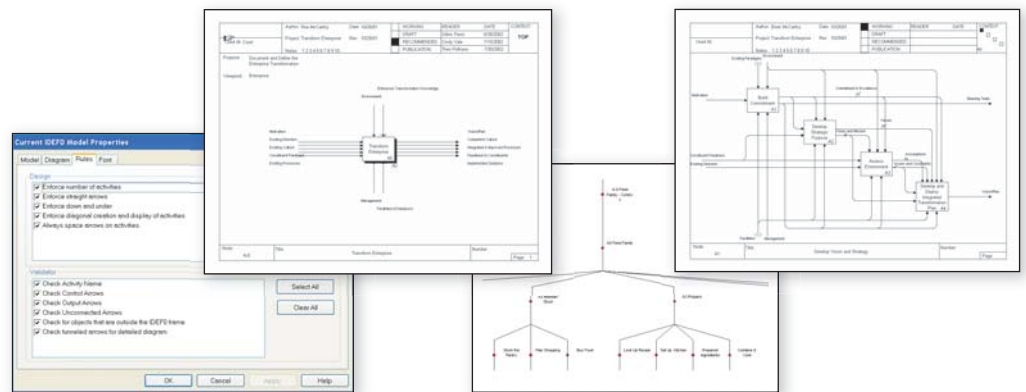
iGrafx IDEF0 is ideal for:

- IDEF0 Professionals
- Aerospace
- Financial Services
- Government
- ISO Registration

Key Features

- Model Setup Wizard
- Rules Enforcement
- Customizable Model Templates
- Glossary of Terms
- FEO, Text and Node Tree Diagrams
- Process Diagrams
- Web, PDF and Microsoft[®] Office Publishing

iGrafx IDEF0[®] is an add-on environment for the iGrafx family of process modeling solutions that enables users to create fully compliant IDEF0 diagrams. With features such as model templates, model setup wizard and correct-by-construction rules enforcement, you can focus on capturing the details of your processes and spend less time learning a new tool.



IDEF0 as a Foundation for Process Improvement

IDEF0 (Integration Definition Language 0) is defined by the Integration Definition for Function Modeling (IDEF0) Standard published by the Federal Information Processing Standards Publication (FIPS PUBS) on December 21, 1993.

iGrafx IDEF0 enables users to exploit the synergies of IDEF0 models side by side with process maps and simulations. As a component of the iGrafx family of solutions, iGrafx IDEF0 diagrams can directly link to swimlane[®] process maps. This unique feature allows system architects and business analysts to leverage the power of two diagramming notations to facilitate communication of processes and increase the comprehension of organizational processes.

iGrafx IDEF0 is a perfect choice for organizations looking for powerful, easy to use IDEF0 modeling on its own or as a tool in a broader process improvement initiative.

A Pillar of Process Excellence

iGrafx IDEF0 is uniquely designed to meet the requirements of IDEF0 modeling while integrating with other iGrafx components for a unified approach to process excellence. The iGrafx solution will help you bridge the gap between the major organization constituencies—IT, process initiatives and business analysts—to ensure a level of process consistency, management, history and control across the enterprise.

Global Headquarters

7585 SW Mohawk Street
Tualatin, OR 97062
Tel.: 503.404.6050
Fax: 503.691.2451
info@iGrafx.com
www.iGrafx.com

European Headquarters

Dr.-Johann-Heitzer-Str. 2
85757 Karlsfeld b. München
Germany
Tel.: +49 (0)8131 3175 100
Fax: +49 (0)8131 3175 101
info.de@iGrafx.com
www.iGrafx.de

For contact details visit:
www.iGrafx.com/contact